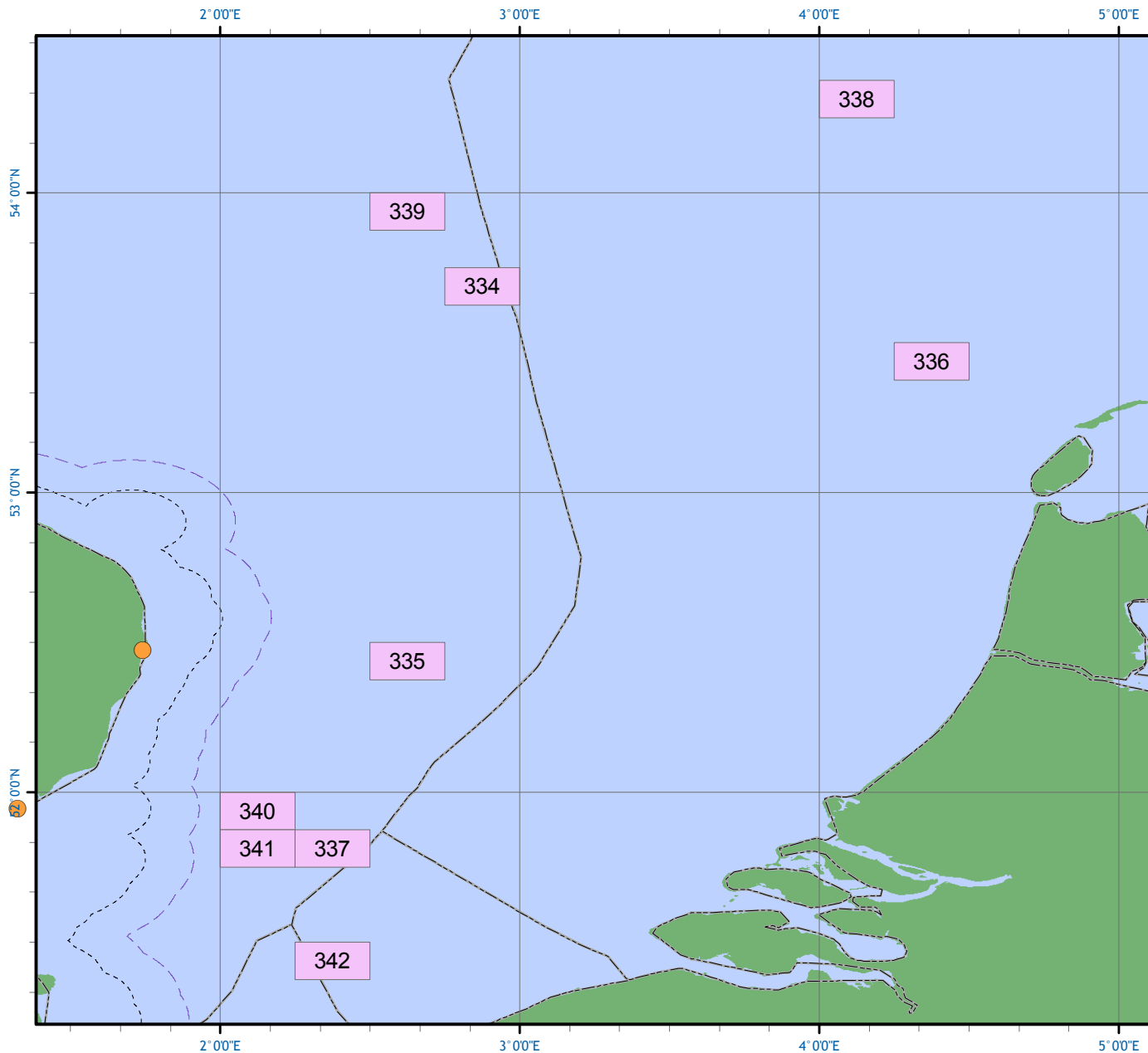


Real time closures: April 2013

26 March 2013. Map produced using the ETRS89 Coordinate Reference System.



- 6 Nautical Mile Limit (UKHO)
- . - . 12 Nautical Mile Limit (UKHO)
- UK Major Ports (UKMPG)
- MMO real time closures (RTCs)
- World Exclusive Economic Zones (V Liz)

Coordinates

This map is for illustrative purposes only. Coordinates for RTCs can be found at www.marinemangement.org.uk/fisheries/monitoring/closures_current.htm

For further advice please contact:
Marine Management Organisation
FMC Operations
Tel: 0191 376 2647
Fax: 0191 376 2501
Email: ops@marinemangement.org.uk

©British Crown, NERC and SeaZone Solutions Ltd. All rights reserved. [SZ042010.001]. ©Crown Copyright and database right 2012. All rights reserved. Ordnance Survey Licence No. 100049981. VLIZ (2013). Maritime Boundaries Geodatabase, version 7. Available online at www.vliz.be/vmdcdata/marbound. NOT TO BE USED FOR NAVIGATION. MMO ref 10094.